

S R P N M L K J H F E D C B A

GND.

-24V

⊗ HI LIMIT INT'LK ADJ.

⊗ LOW LIMIT INT'LK ADJ.

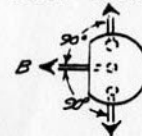
⊗ LATERAL METER ADJ.

⊗ LONG. METER ADJ.

NOTES:

UNLESS OTHERWISE SPECIFIED

TRANSISTORS (EXCEPT Q3)
 BEND BASE LEAD TOWARD FLAT SIDE
 BEND C & E LEADS 90° FROM BASE



- 2 REFERENCE DRAWINGS:
 SCHEMATIC 407-3863
 FABRICATION 407-3883
 ARTWORK 407-3893

- * 3 DASH 1 FOR CV-14 } SEE SCHEMATIC
 DASH 2 FOR CV-8 } FOR VALUE CHANGE
 407-3863

A ADDED DASH NUMBERS		VCB - 7-20-72	FA
REV.	DESCRIPTION	BY	DATE APPROV
DO NOT SCALE DRAWING UNLESS OTHERWISE SPECIFIED			
FINISH	TOLERANCE	INTEL. RADII	USED ON DWG.
	XX ± - AND ± -	BREAK ALL EDGES	
BERKELEY		AIRCO Temescal CALIFORNIA	
A DIVISION OF AIR REDUCTION COMPANY, INCORPORATED			
DRAWN BY	DATE	CHEK BY	APP BY
E. Matson	5/12/71	1/23	E.Y.
A-T STANDARD CV-14/C		SCALE	2/1
LONGITUDINAL FOCUS H.C. BRAND ASSEMBLY		DRAWING NUMBER	REV
		407 3863	13 A